

Learning to Become a Better World

Impact Report: 2023/2024














About us

We are the only adult residential further education college in the Midlands and we are also a charity. We give thousands of people in the local community the opportunity to progress positively with their lives in the direction of their choice, through education. Our offer allows students, guided by us, to choose their own learning journey. As well as helping students to take a practical approach to their learning, we encourage a holistic approach for those who are perhaps unconfident with education, unused to socialising in a busy environment or who need help to manage emotions such as anxiety and stress, before they study a more mainstream course. We are situated in a manor house that once belonged to George Cadbury Jnr. who began the college by educating some of his workforce at lunch times. The college continues the Cadbury ethos of social justice and for over one hundred years remains a vibrant and accessible place in the heart of the West Midlands. Our impact on people and organisations from the local community continues to grow – largely enabled by our main funder, the West Midlands Combined Authority. As well as assisting people into work and volunteering roles with local voluntary sector organisations, we are helping people within work to learn new skills and improve their job prospects. We help people to give themselves a better life and our social justice themes of sustainability and combatting climate change; anti-racism; minimising digital poverty and promoting good mental health are themes that we see as urgent, relevant and that need positive action. This report highlights our impact over the academic year of 2023/2024.

The Learning Journey Through To Progression

<div>100% pass rate on Access to Higher Education Diplomas</div> <div></div>	<div>100% pass rate on short adult skills courses</div> <div></div>	<div>100% pass rate on community learning courses</div> <div></div>
<div>19% progressed into employment</div> <div></div>	<div>21% progressed into other education</div> <div></div>	<div>13% progressed into part-time further education</div> <div></div>
<div>6% progressed into volunteering roles</div> <div></div>	<div>99% retention on short adult skills courses</div> <div></div>	<div>97% retention on community learning courses</div> <div></div>

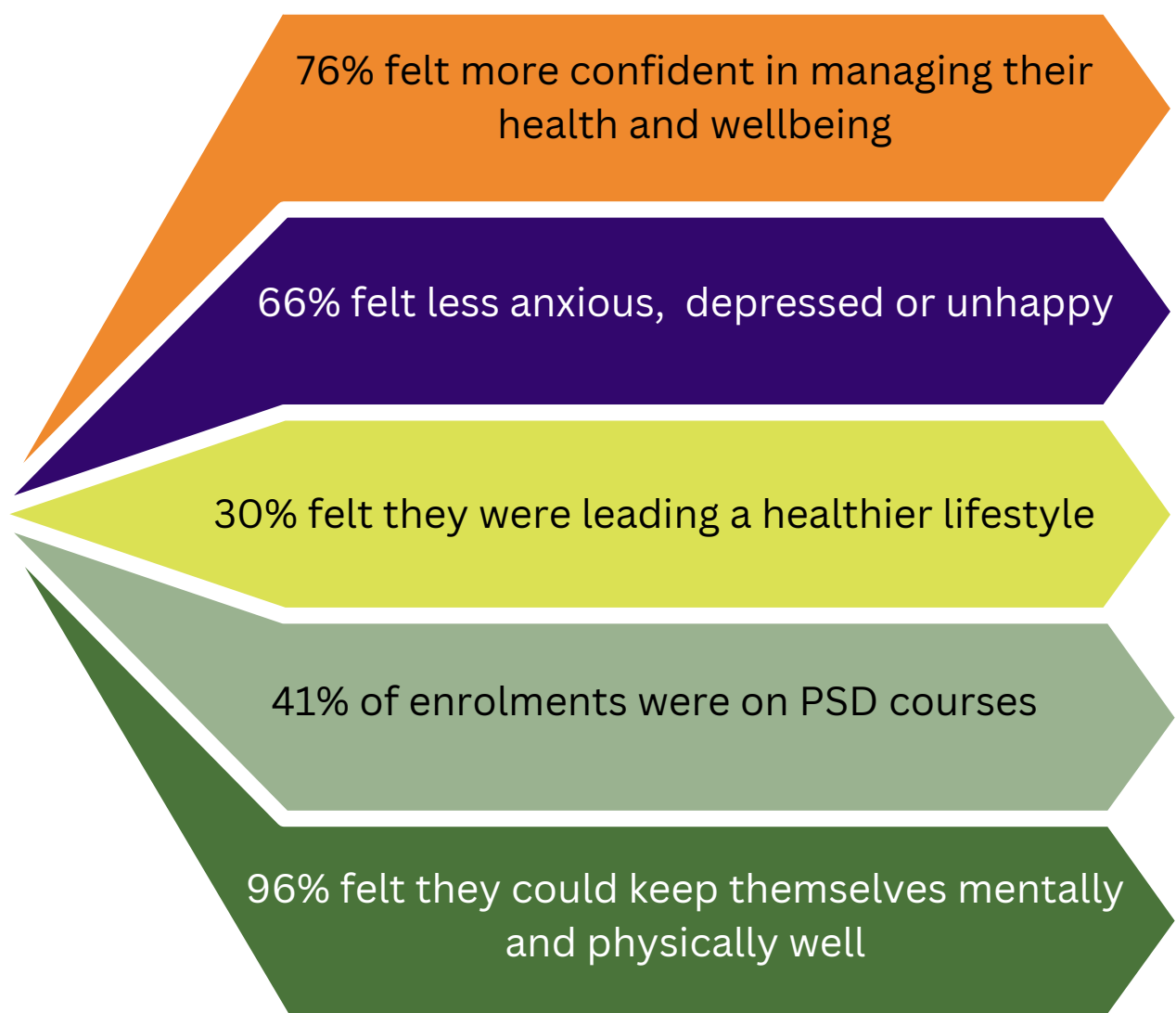
“Both coursers opened my eyes and made me question myself and my behaviour. It was an amazing experience”

-PSD student

Personal and Social Development

Our personal and social development courses play a big part in many of our students’ lives. Some may not have been in education for some time; some may be in recovery; some may have mild learning disabilities or lack confidence. We are there for them and we realise that to move forward and progress, they may need to enrol onto several personal and social development courses prior to studying a more academic programme.

Following our Personal and Social Development courses, students reported:



Our Students

As a residential education college, our primary role is to provide high-quality learning for our students within a safe and supportive environment. Our students often face disadvantage and many have long, challenging and transformative learning journeys. To be effective, we take a holistic approach. Therefore the learning outcomes our students set themselves and achieve are underpinned by wider outcomes that encourage them to reflect with more depth and meaning, on where they want their future to go.



“Leaders, teachers and support staff understand the individual challenges and needs of learners. They take these into account when planning teaching and providing the support that learners need. Learners with additional needs achieve as well as their peers”.

-Ofsted report 2023

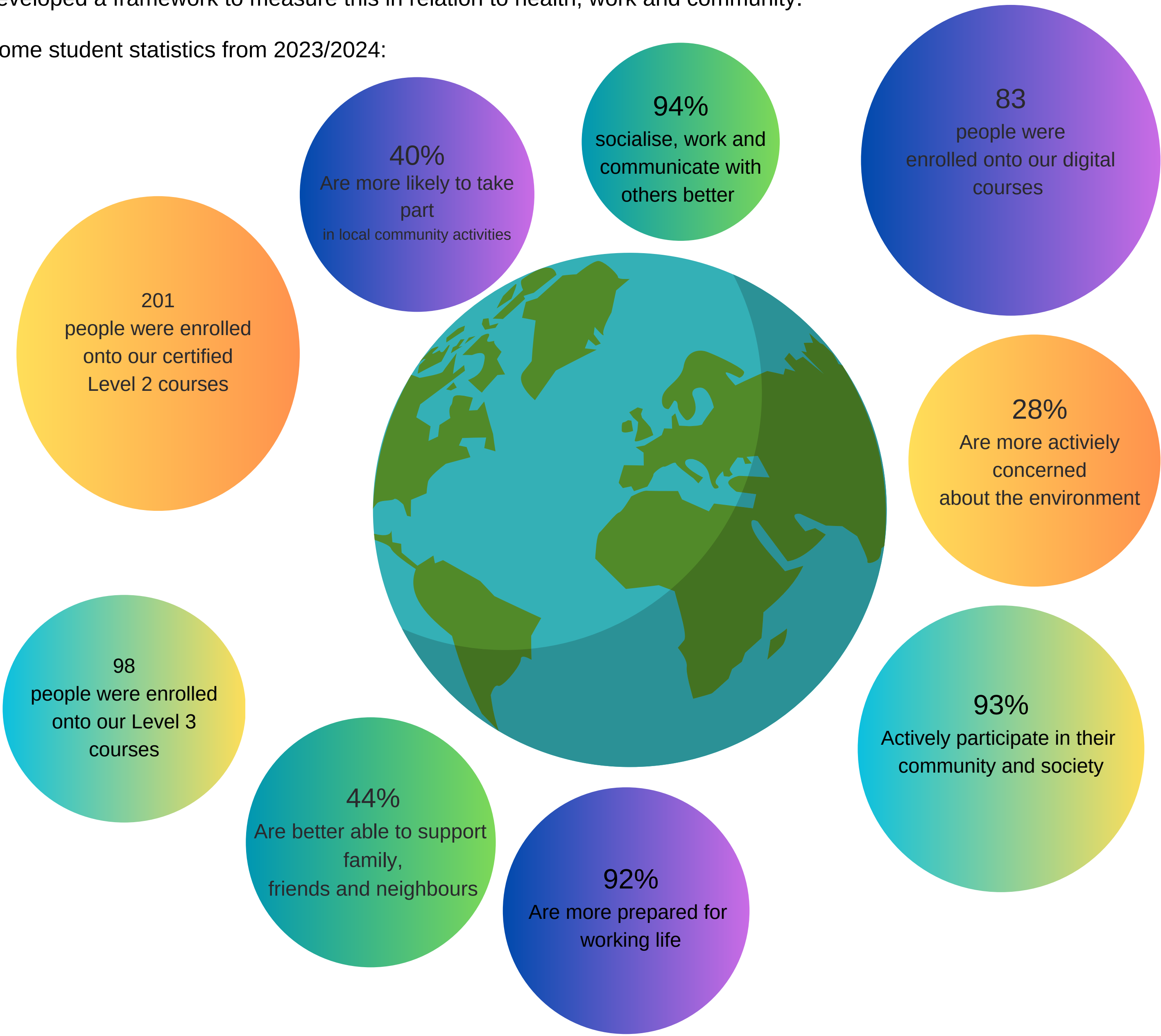
Global Citizens

Our vision:

‘To promote social and climate/environmental justice by providing adults with an excellent learning environment for personal, professional and political development’

Our Strategy Towards 2030 has the one goal “To support the development of global sustainable citizens” and we have developed a framework to measure this in relation to health, work and community.

Some student statistics from 2023/2024:



“Staff are friendly & welcoming, it's like a home from home. A relaxed environment where a student can re-focus and re-set”
-PSD student

Sustainability And Climate Change

Fircroft college is one of the smallest colleges in England and one of only two residential colleges left in the FE landscape. We have big ambitions however in our commitment to social and climate/environmental justice which we see as fundamentally interlinked and inter-related. We were the first college in England to declare a climate emergency and our ambitions are manifested in our college wide green pledge which tells the world what we are committed to delivering under the areas of sustainable learning, sustainable spaces, sustainable living and sustainable people, partners and communities. Our climate action plan reflects our four green pledge areas. Our cross college green team which includes students, ensures our plans and actions are understood across the college. In our last engagement survey in 2023, 100% of staff agreed that they understood the college’s focus and aims on green/sustainability and the contribution they make to it.

Each member of staff has an annual “green objective”

We were finalists in the Green Gown Awards (having won the Campus Health, Food and Drink category in 2022)

25% of our “home cooked” food consists of produce from our grounds

We developed our Green Pledge with the themes of:

- Sustainable learning
- Sustainable living
- Sustainable people, partners and communities
- Sustainable spaces

Our seasonal Mother Garden Bootcamp course continued

20% of our curriculum offer is themed around green skills and sustainability

146 students said their knowledge of outdoor and/or sustainable learning, had improved

In 2023 we became the first college in the country to be awarded “Cycle-friendly Employer” status by Cycling UK



Learning to become a better world

Contact us:

Tel; 0121 472 0116

Email: Admissions@fircroft.ac.uk