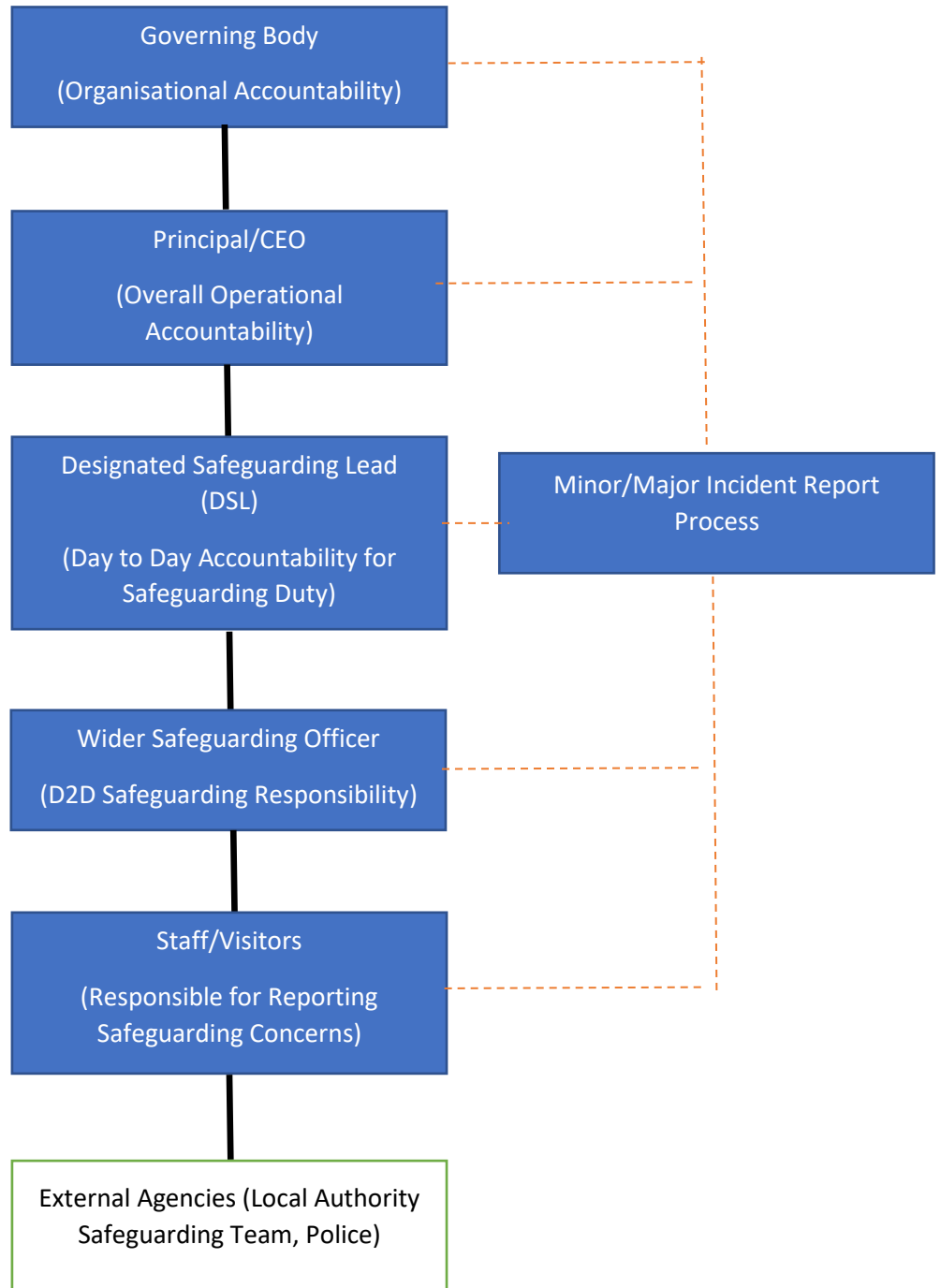


Safeguarding Duty – Delegation of Authority





Responsibilities

1. Governing Body / Board

- **Overall Accountability:** Ensures the college has effective safeguarding policies and procedures.
- **Strategic Oversight:** Monitors compliance with statutory requirements.
- **Lead Governor for Safeguarding:** Provides challenge and support to senior leaders.

2. Principal / Senior Leadership Team

- **Leadership Responsibility:** Ensures safeguarding is embedded in the college culture.
- **Policy Implementation:** Makes sure strategically the organisations policies and procedures are up to date and staff are trained.
- **Resource Allocation:** Provides adequate resources for safeguarding.

3. Designated Safeguarding Lead (DSL)

- **Central Role:** The main point of contact for safeguarding concerns.
- **Case Management:** Coordinates referrals to local authority, police, or other agencies.
- **Training & Awareness:** Ensures staff understand safeguarding procedures.
- **Record Keeping:** Maintains accurate and confidential records.

4. Wider Safeguarding team

- **Support Role:** Assists the DSL and acts in their absence.
- **Case Management:** Act as first point of contact whilst on duty. Act as support to wider safeguarding team where needed. Investigate safeguarding concerns where needed.
- **Specialist Knowledge:** Often covers specific areas like Prevent (counter-terrorism) or online safety which the college may look to adopt in the coming terms.

5. All Staff and Visitors

- **Duty of Care:** Every staff member has a responsibility to safeguard learners.
- **Reporting Concerns:** Must follow the college's safeguarding policy and report any concerns immediately.
- **Training:** Complete mandatory safeguarding and Prevent training.



6. Safeguarding Governor

- **Monitoring Role:** Ensures safeguarding is a standing agenda item at board meetings.
- **Challenge & Assurance:** Checks that policies and practices are effective.

7. External Agencies

- **Local Authority Safeguarding Adults Board:** Provides guidance and oversight for adult safeguarding.
- **Police / Social Services:** Handle investigations and interventions when necessary.